

Polydoc Web

Software Installation Guide

(Windows NT4 / IIS4)

Contents

	Page
Introduction	3
Building an IIS web site	4
Defining a User Service Account	10
Connecting the Service Account.....	11

Introduction

This document will give you guidance on how to install the Polydoc Web software. See also our other documents about installation and update issues.

Throughout this document we have used Windows NT 4.0 server and Internet Information Server 4.0.

Note: In your environment, some of the figures may have other tabs and options. This is depending of what has been installed on your server. You may also want to re-define or extend some of the settings specified. Your Windows folder may have a different name etc.

Building an IIS web site

Create the C:\inetpub\wwwroot\Polydoc folder using the Windows Explorer.
Copy the Polydoc Web pages folder tree from the media to C:\inetpub\wwwroot\Polydoc.

Bring up the Internet Service Manager which can be found by clicking on Windows Start button and then Programs -> Windows NT 4.0 Option Pack -> Microsoft Internet Information Server.

Select Tree view and open the Internet Information Server folder.
Open the PC folder (the name of your server) and open Default Web site.

Now, find the Polydoc folder you earlier created.
Right click the Polydoc folder and select Properties (also available in the Action menu).

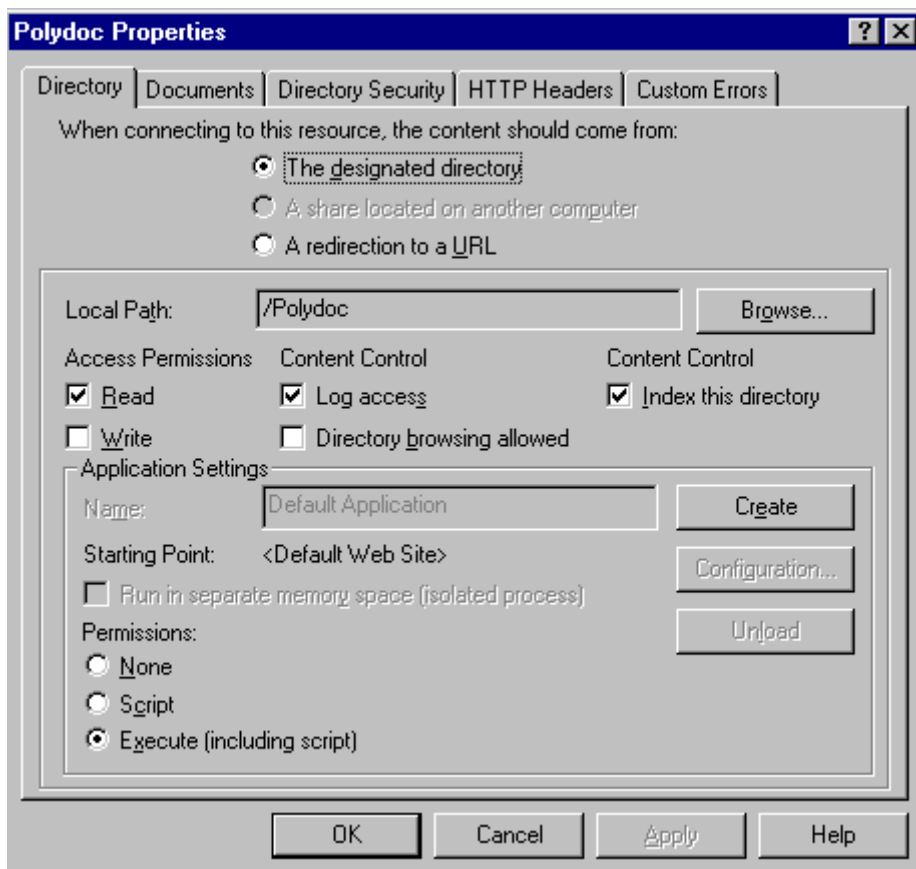


Fig A-1. Polydoc Properties part 1

Press the Create button.

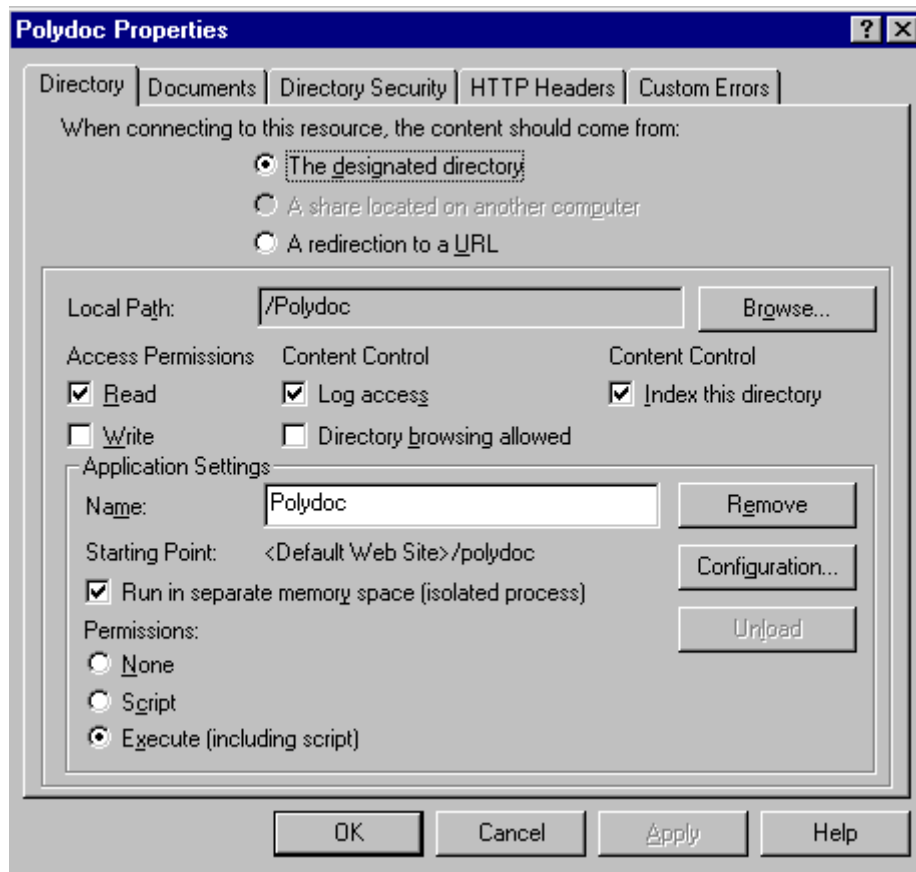


Fig A-2. Polydoc Properties part 2

Press the Configuration... button in the Application Settings.

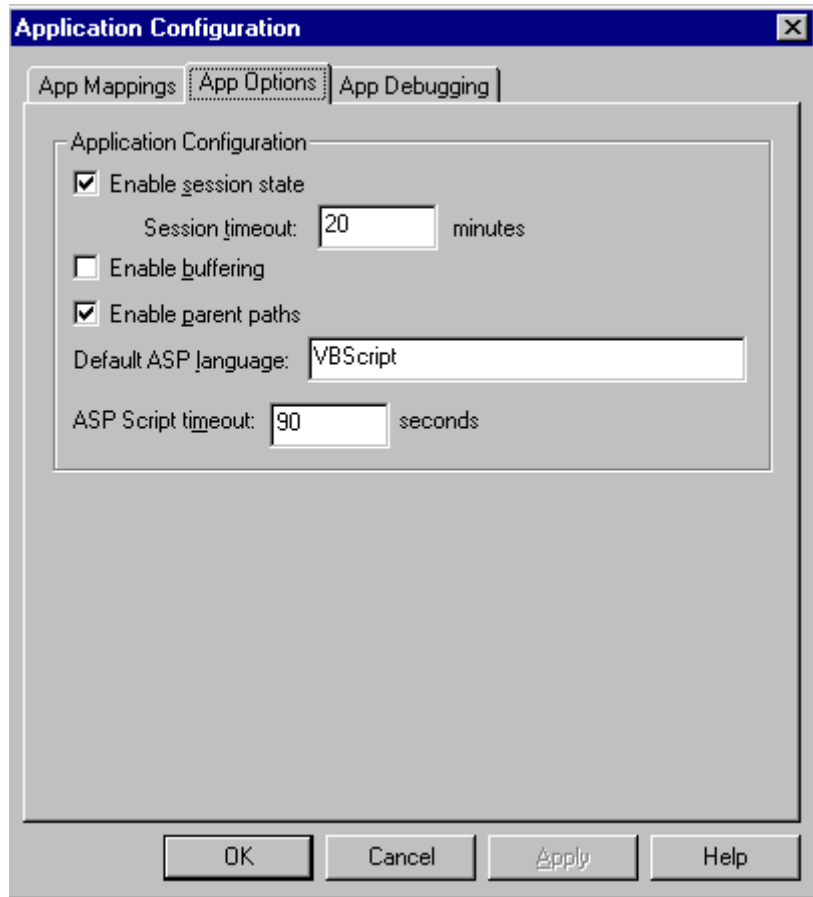


Fig A-3. Application Configuration

Set up the App Options tab as shown above and press the OK button.

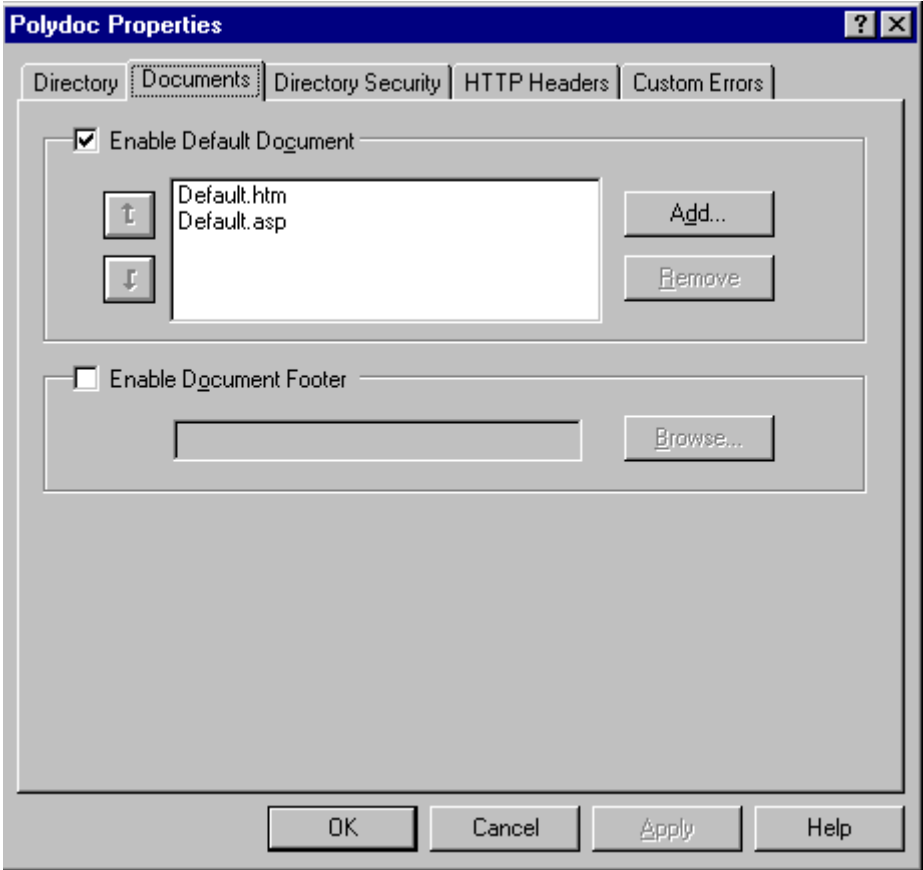


Fig A-4. Documents tab

In properties, set up the Documents tab as shown above.

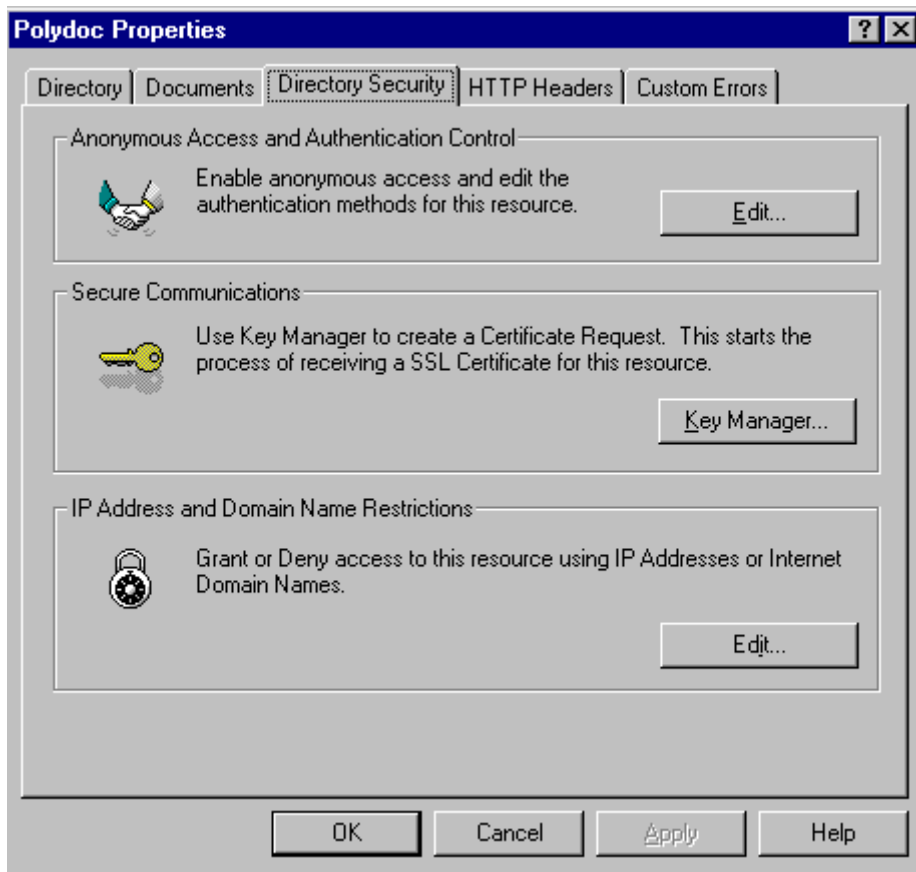


Fig A-5. Directory Security tab

Press the Edit... button for Anonymous Access and Authentication Control.

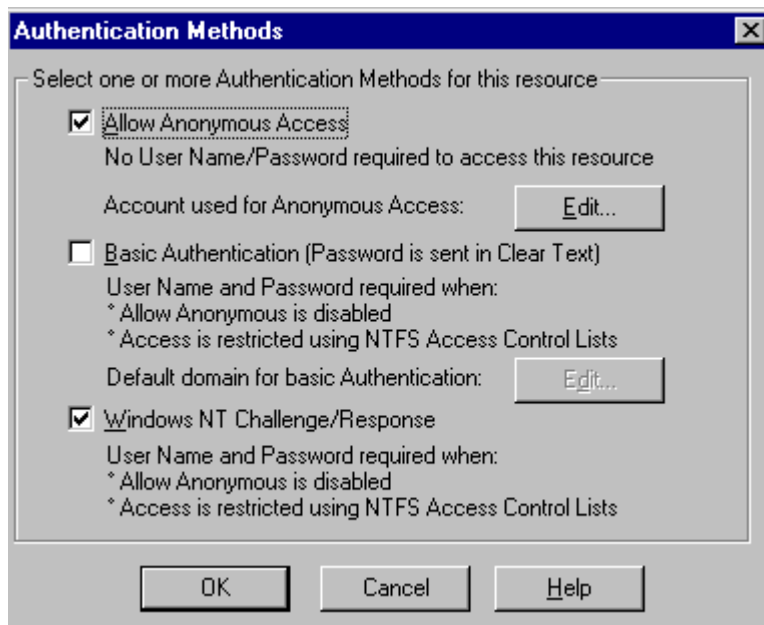


Fig A-6. Authentication Methods

Set up the Authentication Methods as shown above. An account used for Anonymous Access can be selected if you press the Edit... button. Then press the OK button.

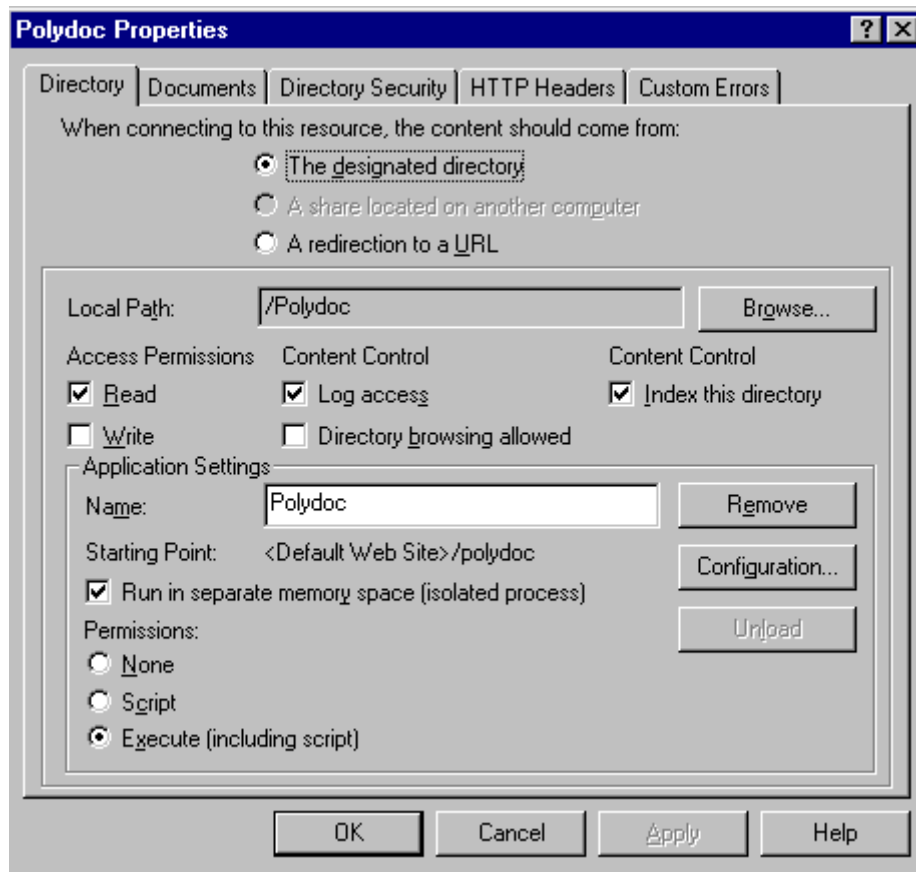


Fig A-7. Polydoc Properties part 3

Set the permissions to Script. Execute (including script) is not necessary. You may also remove the selection of “Log access” and “Index this directory” (selected in the figure).

Press the OK button to save the Polydoc folder properties. Exit the Internet Service Manager.

Defining a User Service Account

The Polydoc Web software will run using this service account when started by IIS.

NB! If you are installing the Polydoc Web Personal Edition, you may use your own account as the service account and are not required to create a new account. You may continue with the next chapter **Connecting the Service Account**.

Bring up the User Manager for Domains which can be found by clicking on Windows Start button and then Programs -> Administrative Tools (Common).

Create a new domain user (or a local user). For instance, PolyServer.

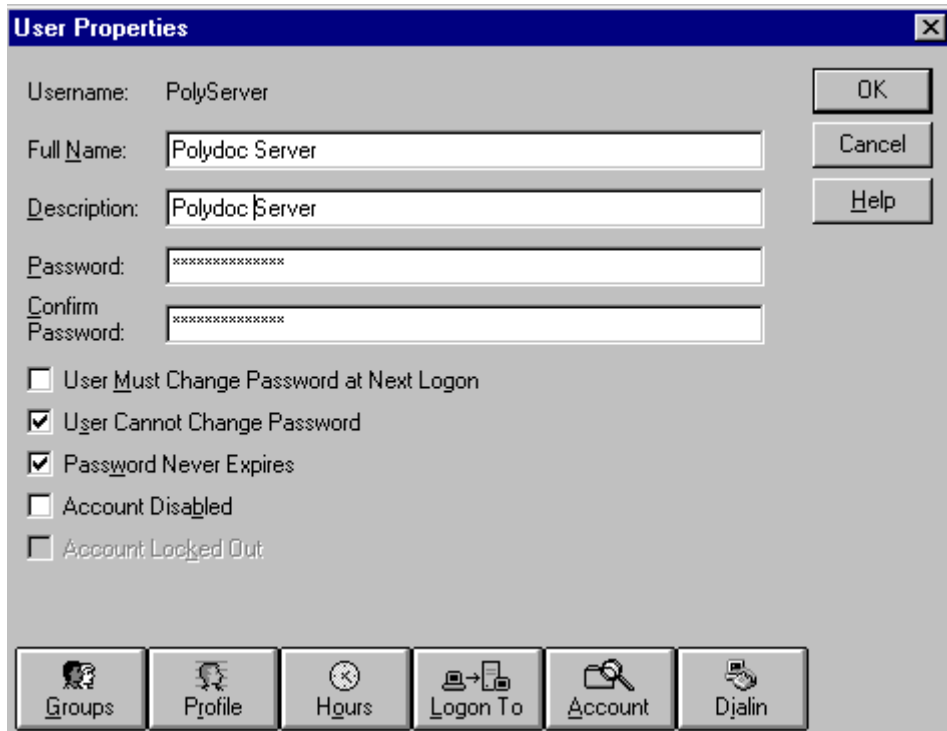


Fig B-1. User Properties

Set up the User Properties as shown above. Press OK to save the settings. You may then add this user to user groups and policies as appropriate.

This user account should also have read and write access to the Polydoc Web software folder, a Temp-folder like C:\Temp, registry location HKLM\Software\Fsim\Polydoc and a Polydoc installation. It should also have read access to the databases.

Connecting the Service Account

Open a Command prompt.

Go to the Polydoc Web software folder (see the installation guide).

Copy the Polydoc Web programs from the media to this folder.

Type PolyServer.exe /REGSERVER and press Enter.

Type Regsvr32 PolyAsp.dll and press Enter.

Start the dcomcnfg.exe program, which can be found in C:\Windows\System32.

In the Application tab, find the PolyServer line. Press the Properties... button.

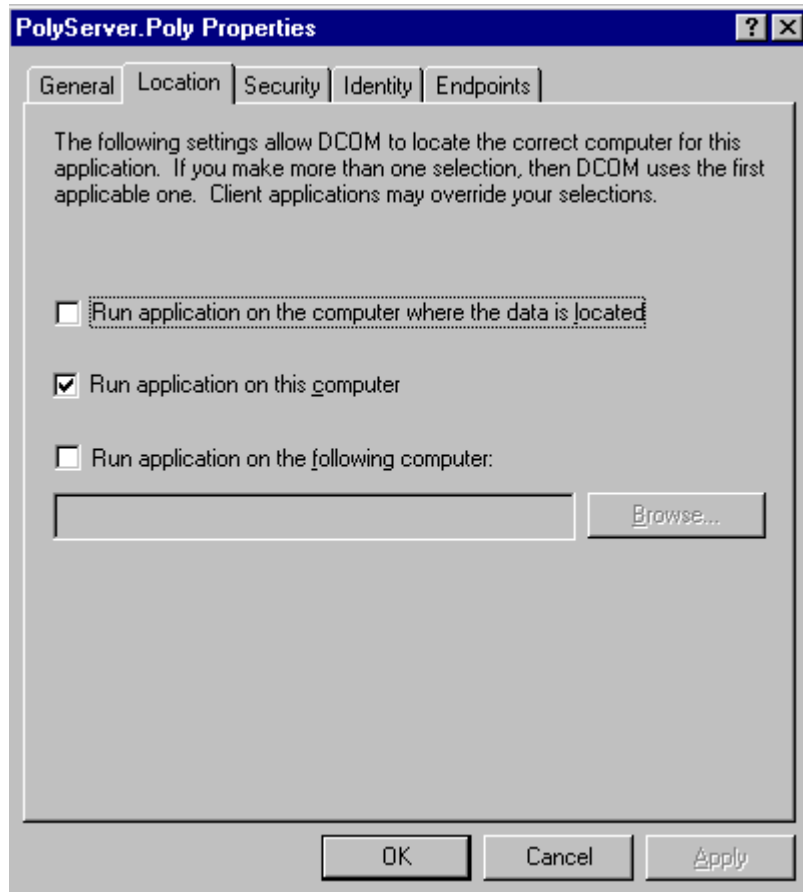


Fig C-1. PolyServer Properties - Location tab

In the Location tab, select Run application on this computer.

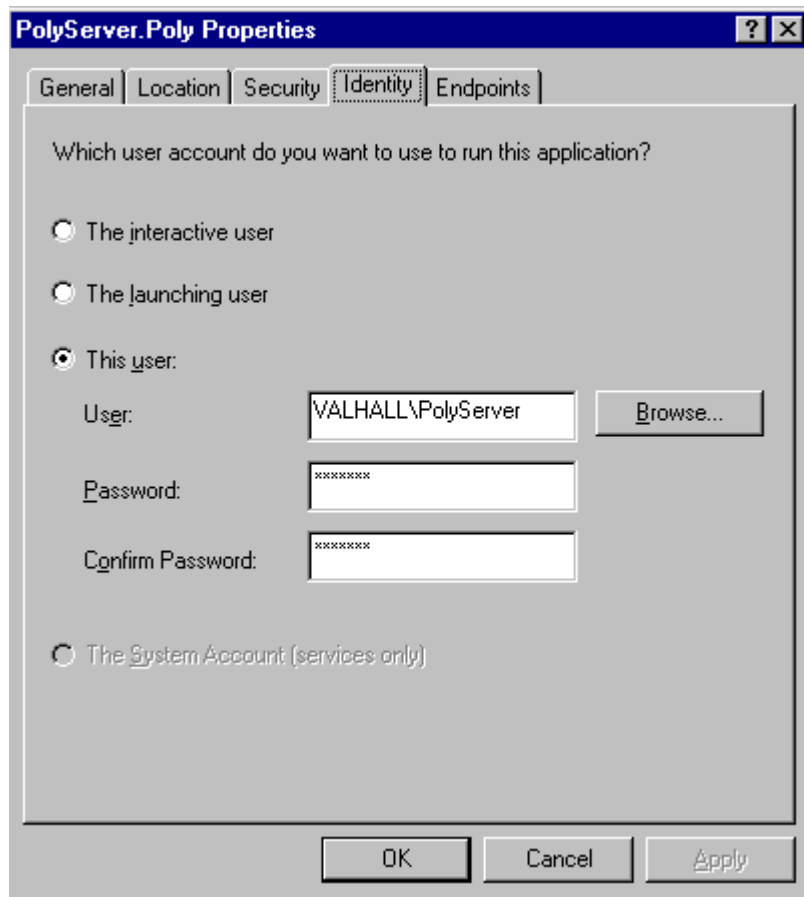


Fig C-2. PolyServer Properties - Identity tab

In the Identity tab, select to run the PolyServer application as “This user” and enter the name and password of the previously created user account. In this example, VALHALL is the name of the domain. Alternatively, you may select a local user account.

NB! If you are installing the Polydoc Web Personal Edition, you may use your own account as the service account. Alternatively, you may select option “The interactive user” - if selected, the application can only be run when someone is logged in.

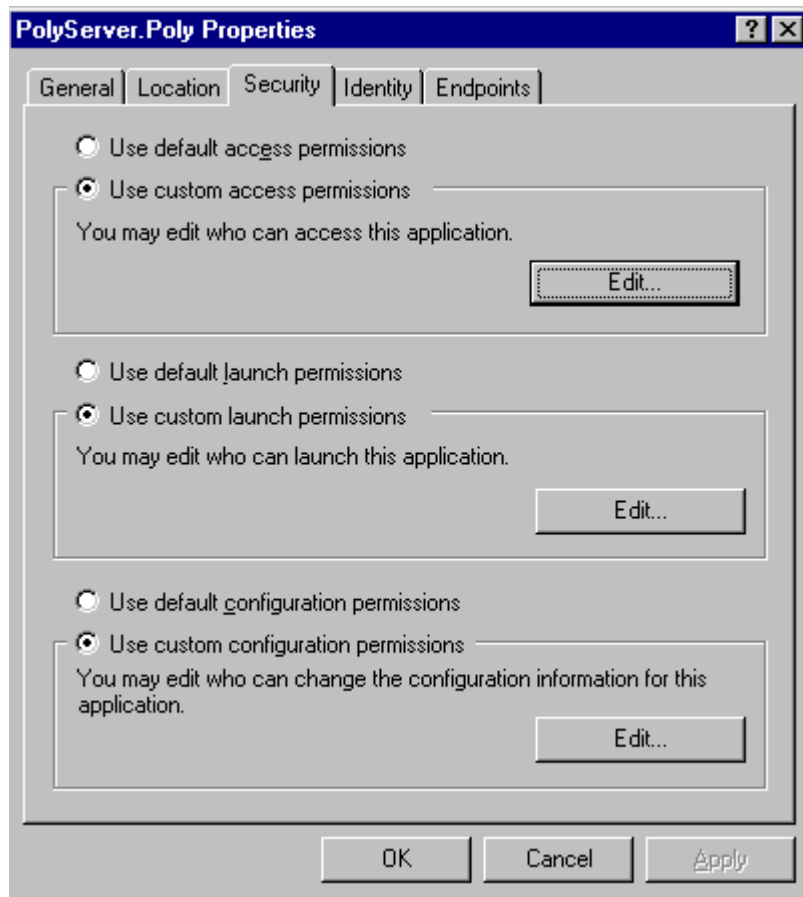


Fig C-3. PolyServer Properties - Security tab

In the Security tab, you may select custom access and launch permissions, see the next page. Then press OK to save the settings of the PolyServer object and press OK to save all the new settings and exit the dcomcnfg program.

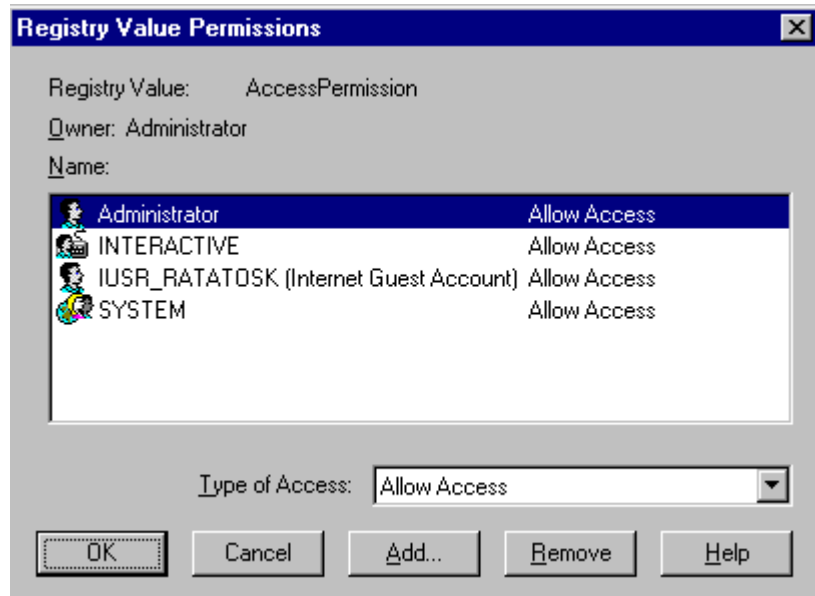


Fig C-4. PolyServer Properties - Access permissions

Set up the Access Permissions as shown above and press the OK button. The computer name is RATATOSK.

Also add IWAM_RATATOSK (Launch IIS Process Account). Not shown in figure.

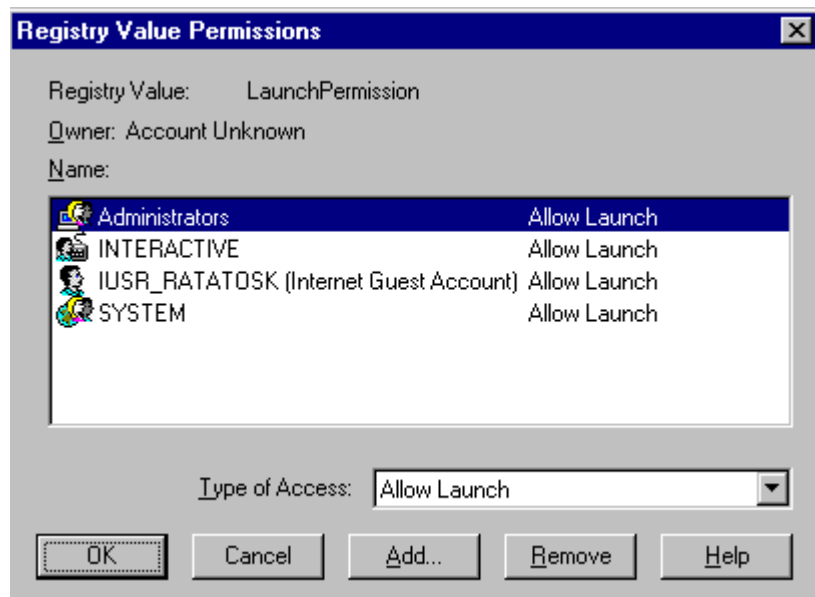


Fig C-5. PolyServer Properties – Launch permissions

Set up the Launch Permissions as shown above and press the OK button. The computer name is RATATOSK.

Also add IWAM_RATATOSK (Launch IIS Process Account). Not shown in figure.