

# ***Polydoc Web***

## ***Software Installation Guide***

***(Windows 2000 / IIS5 )***

# Contents

|                                       | <b>Page</b> |
|---------------------------------------|-------------|
| Introduction .....                    | 3           |
| Building an IIS web site .....        | 4           |
| Defining a User Service Account ..... | 11          |
| Connecting the Service Account.....   | 12          |

## **Introduction**

This document will give you guidance on how to install the Polydoc Web software. See also our other documents about installation and update issues.

Throughout this document we have used Internet Information Server 5.x.

Note: In your environment, some of the figures may have other tabs and options. This is depending of what has been installed on your server. You may also want to re-define or extend some of the settings specified. Your Windows folder may have a different name etc.

## Building an IIS web site

Create the C:\inetpub\wwwroot\Polydoc folder using the Windows Explorer.  
Copy the Polydoc Web pages folder tree from the media to C:\inetpub\wwwroot\Polydoc.

Bring up the Internet Service Manager which can be found by clicking on Windows Start button and then Control Panel -> Administrator Tools -> Internet Information Services.

Select Tree view, open the PC folder (the name of your server) and open Default Web site.

Now, find the Polydoc folder you earlier created.

Right click the Polydoc folder and select Properties (also available in the Action menu).

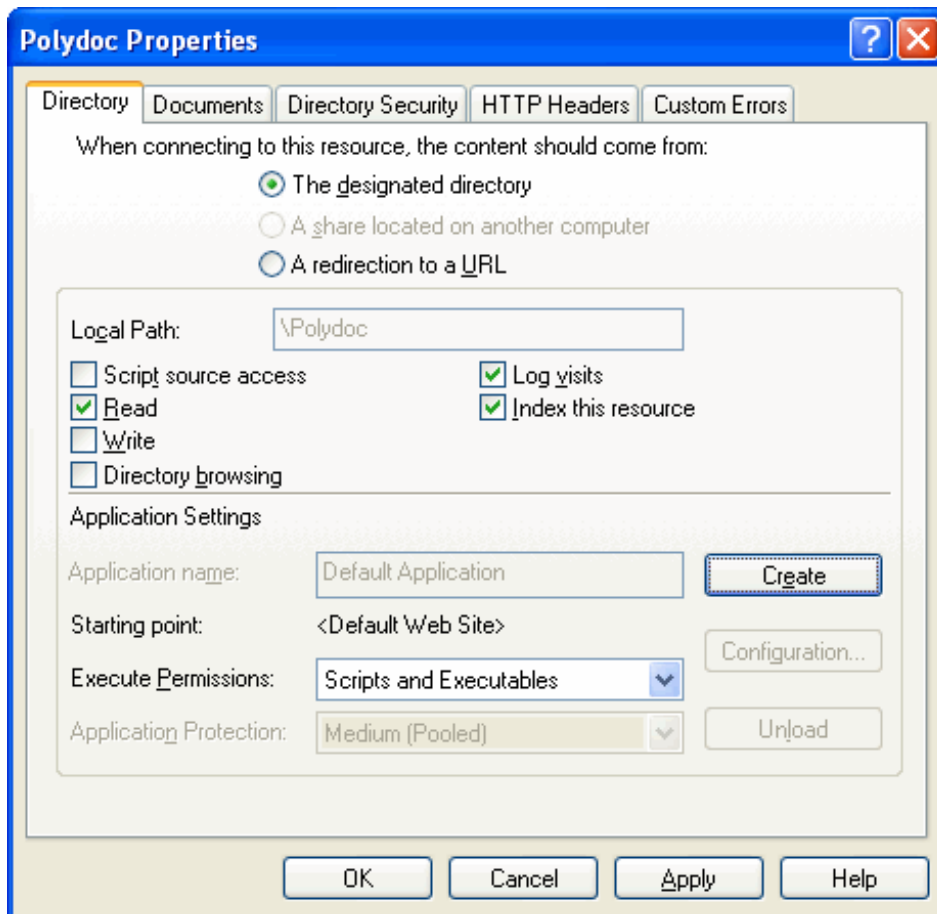
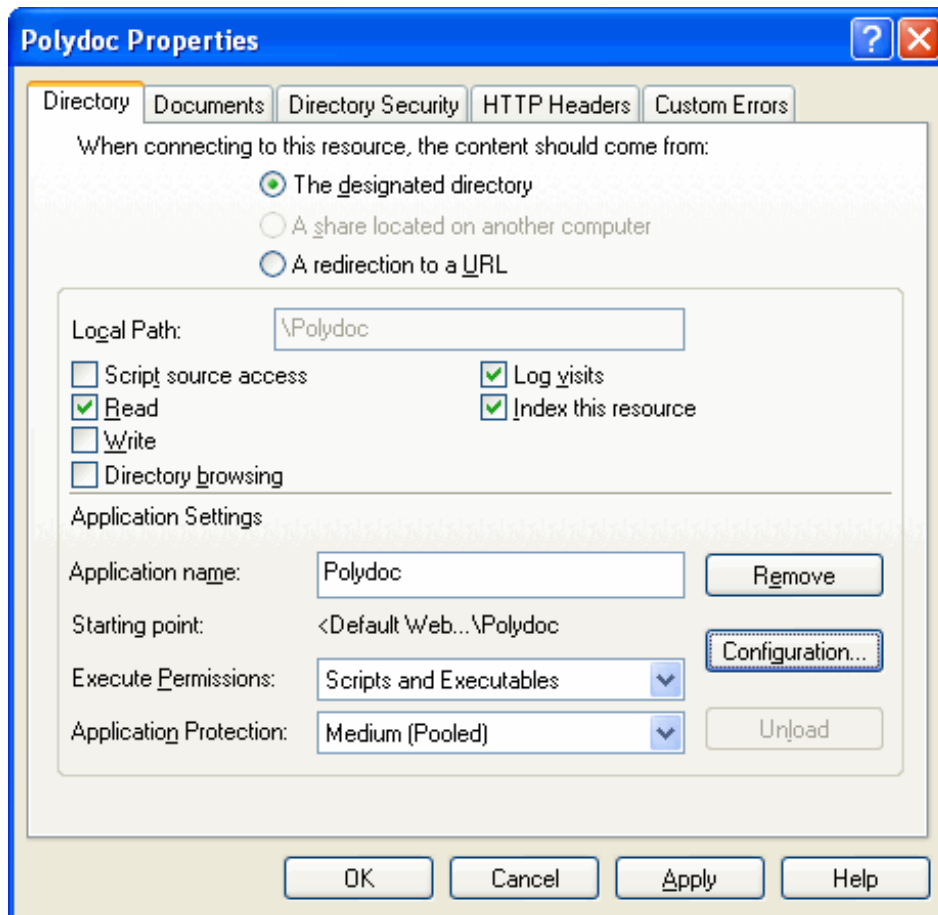


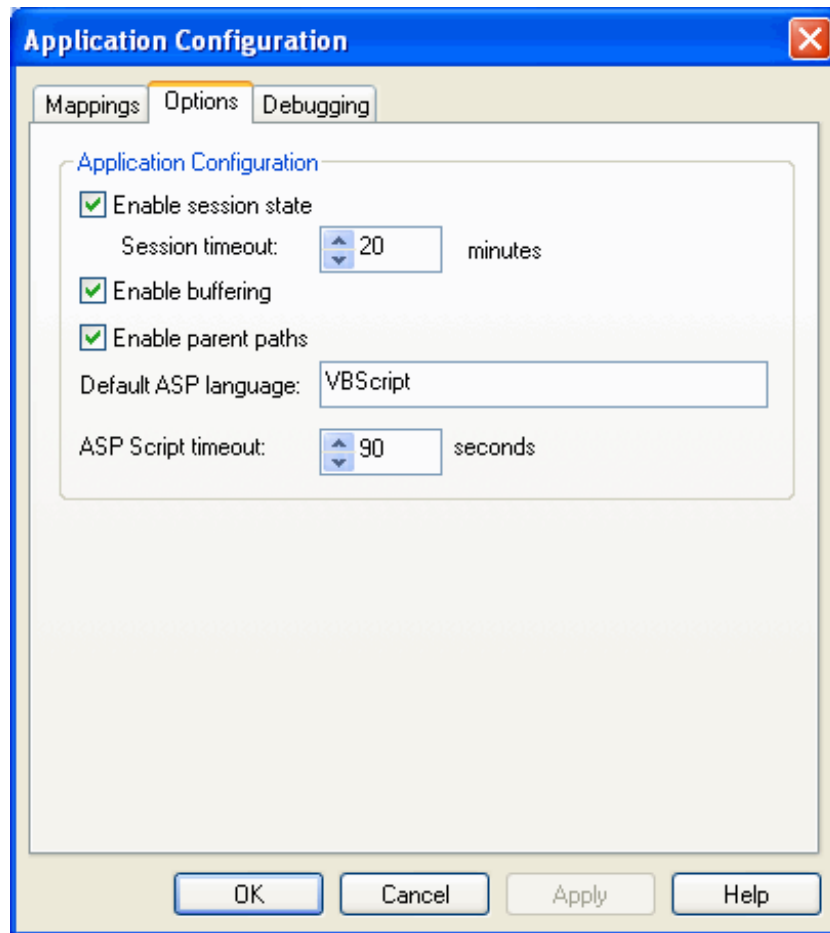
Fig A-1. Polydoc Properties part 1

Press the Create button.



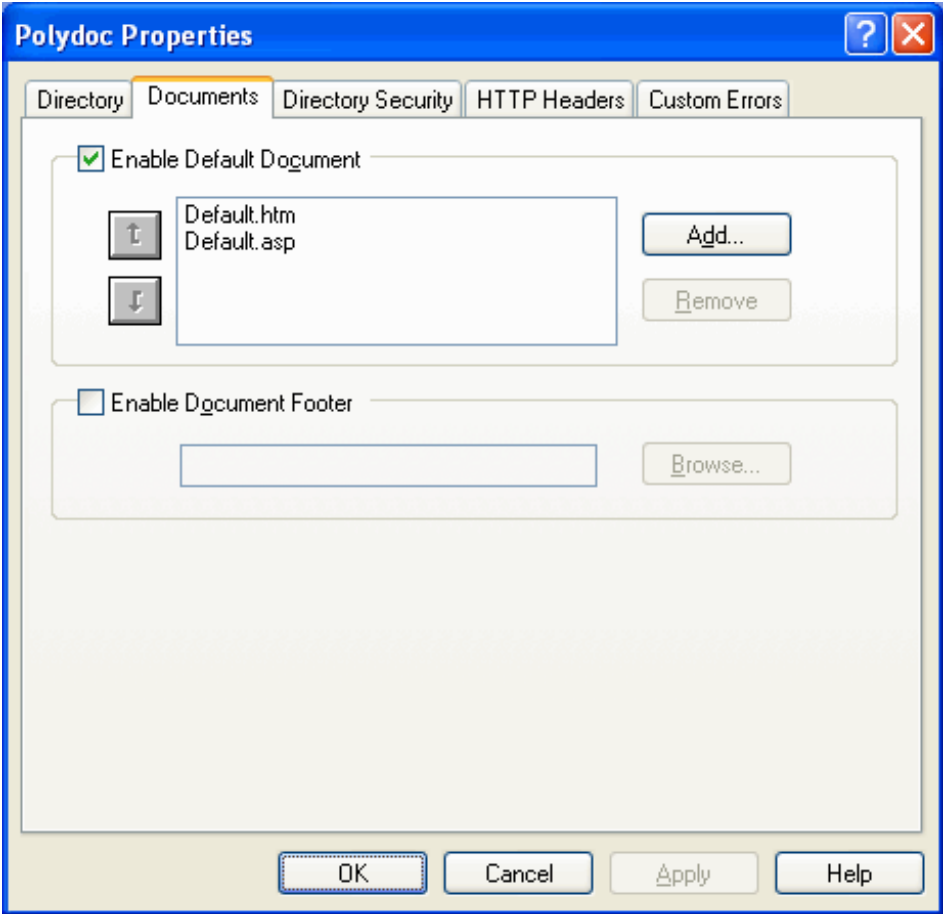
**Fig A-2. Polydoc Properties part 2**

Press the Configuration... button in the Application settings.



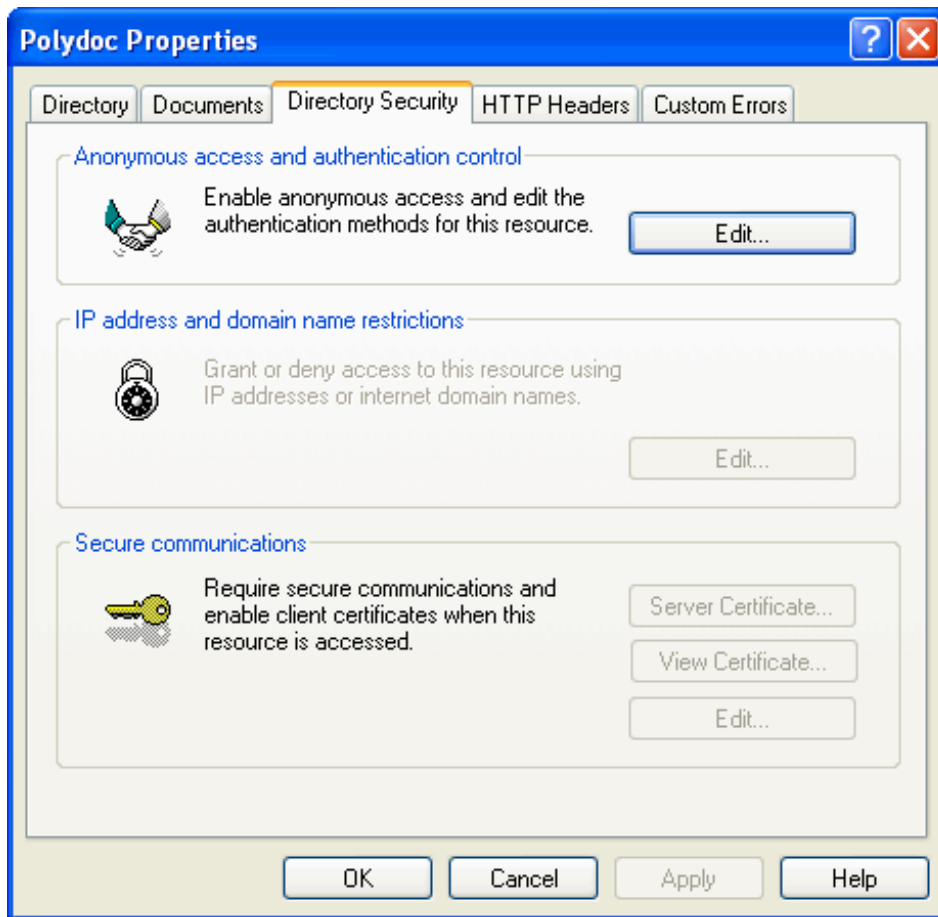
**Fig A-3. Application Configuration**

Set up the Options tab as shown above and press the OK button.



**Fig A-4. Documents tab**

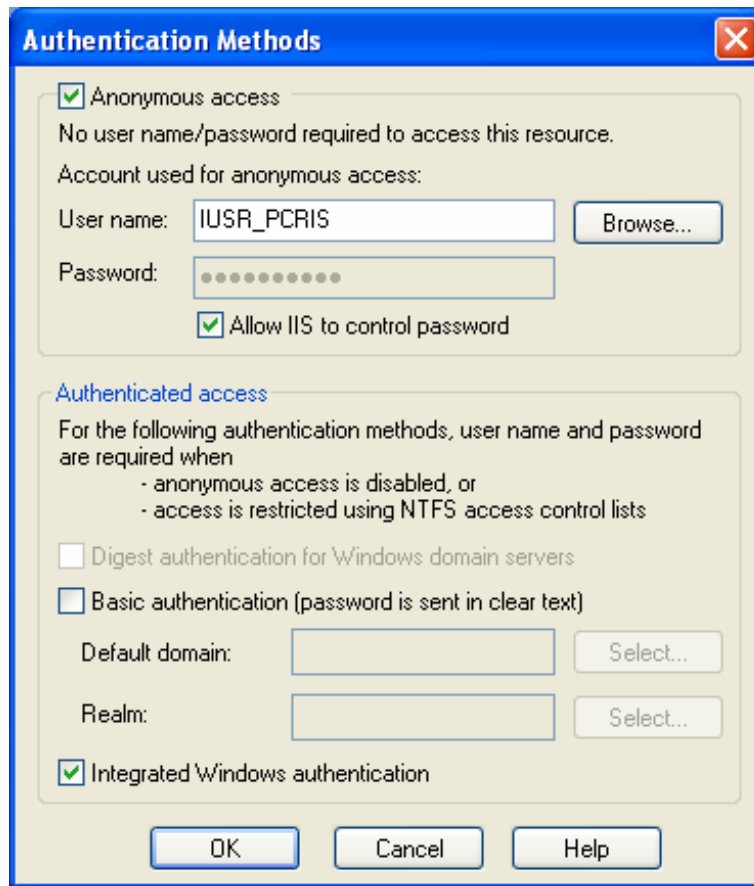
In properties, set up the Documents tab as shown above.



**Fig A-5. Directory Security tab**

Press the Edit... button for Anonymous Access and Authentication Control.

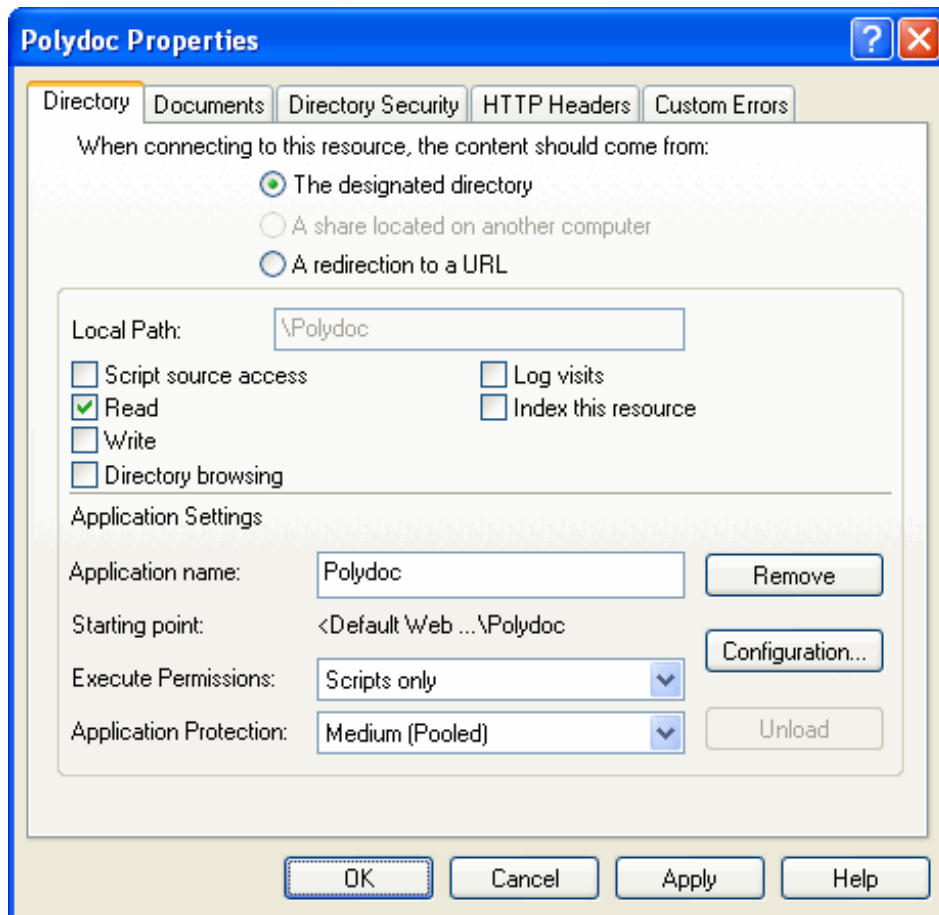




**Fig A-6. Authentication Methods**

Set up the Authentication Methods as shown above and press the OK button.

Note: PCRIS is the name of our computer, you will have a different name.



**Fig A-7. Polydoc Properties part 3**

Set the Execute Permissions to Scripts only. Executables is not required. You may also remove the selection of Log visits and Index this resource.

Press the OK button to save the Polydoc folder properties. Exit the Internet Service Manager.

## Defining a User Service Account

The Polydoc software will run using this service account when started by IIS.

NB! If you are installing the Polydoc Web Personal Edition, you may use your own account as the service account and are not required to create a new account. You may continue with the next chapter **Connecting the Service Account**.

Bring up the User Manager which can be found by clicking on Windows Start button and then Control Panel -> User Accounts or Start button -> Control Panel -> Administrative Tools -> Computer Management -> System Tools -> Local Users and Groups -> Users.

Create a new user (a domain user or a local user). For instance, PolydocServer.

**Fig B-1. User Properties**

Set up the User Properties as shown above. Press Create to save the settings. You may then add this user to user groups and policies as appropriate.

This user account should also have read and write access to the Polydoc Web software folder, a Temp-folder like C:\Temp, registry location HKLM\Software\Fsim\Polydoc and a Polydoc installation. It should also have read access to the databases.

## Connecting the Service Account

Open a Command prompt.

Go to the Polydoc Web software folder (see the installation guide).

Copy the Polydoc Web programs from the media to this folder.

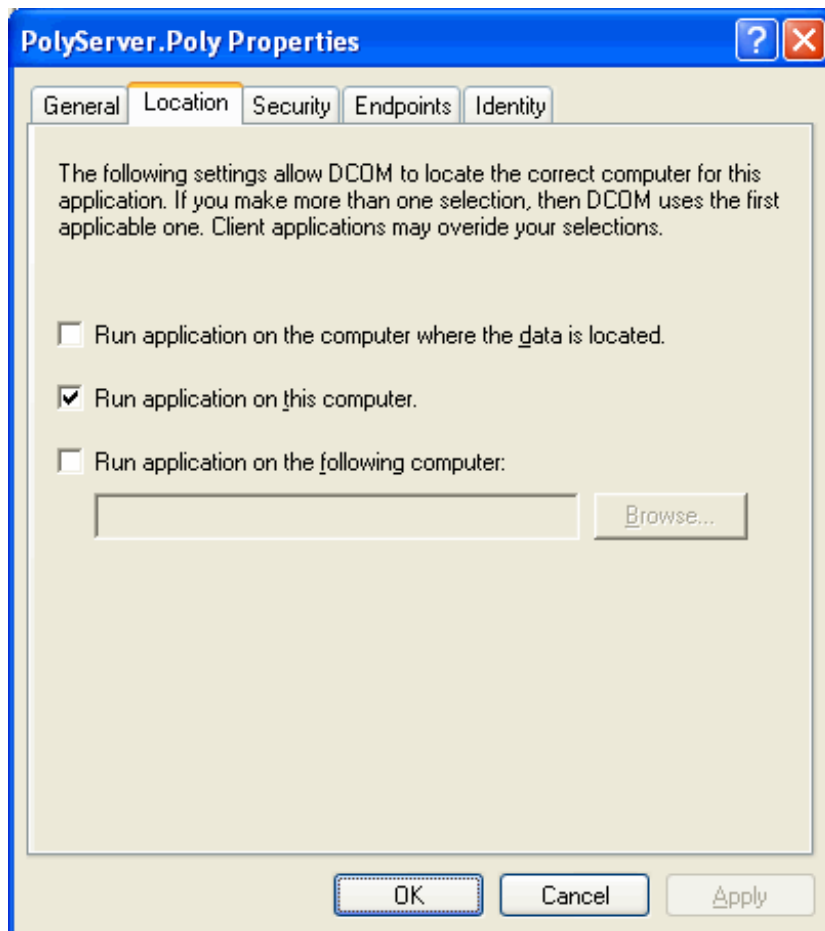
Type PolyServer.exe /REGSERVER and press Enter.

Type Regsvr32 PolyAsp.dll and press Enter.

Start the dcomcnfg.exe program, which can be found in C:\Windows\System32.

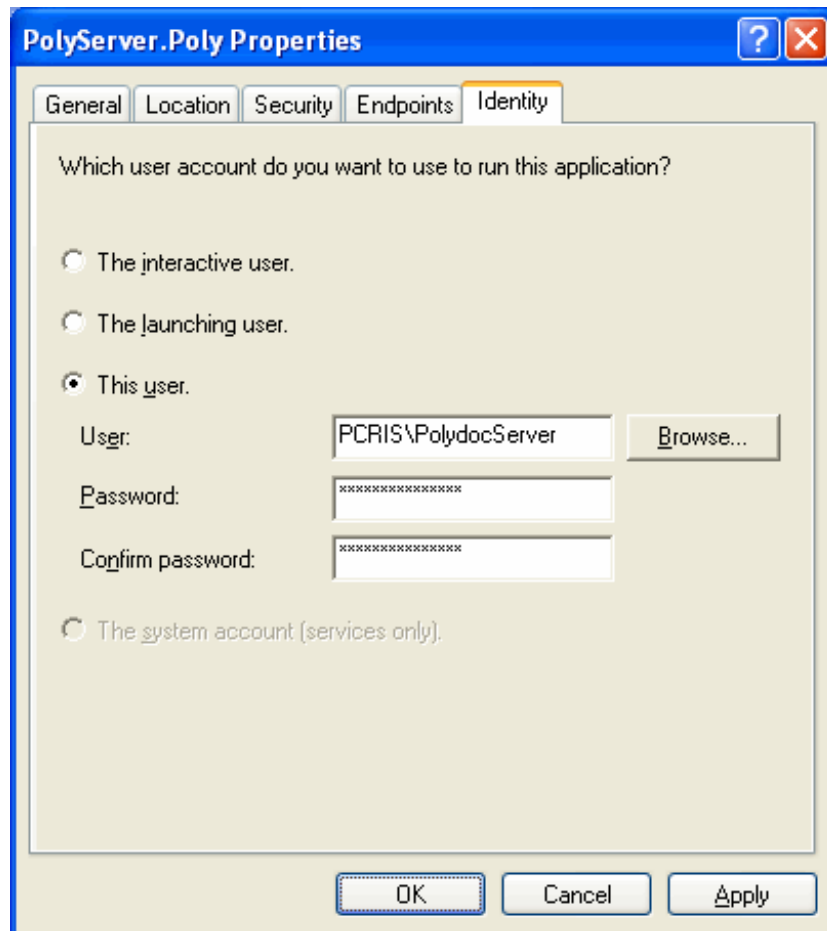
Open Console Root -> Component Services -> Computers -> My Computer -> DCOM config.

Locate the PolyServer line. Press the Properties... button.



**Fig C-1. PolyServer Properties - Location tab**

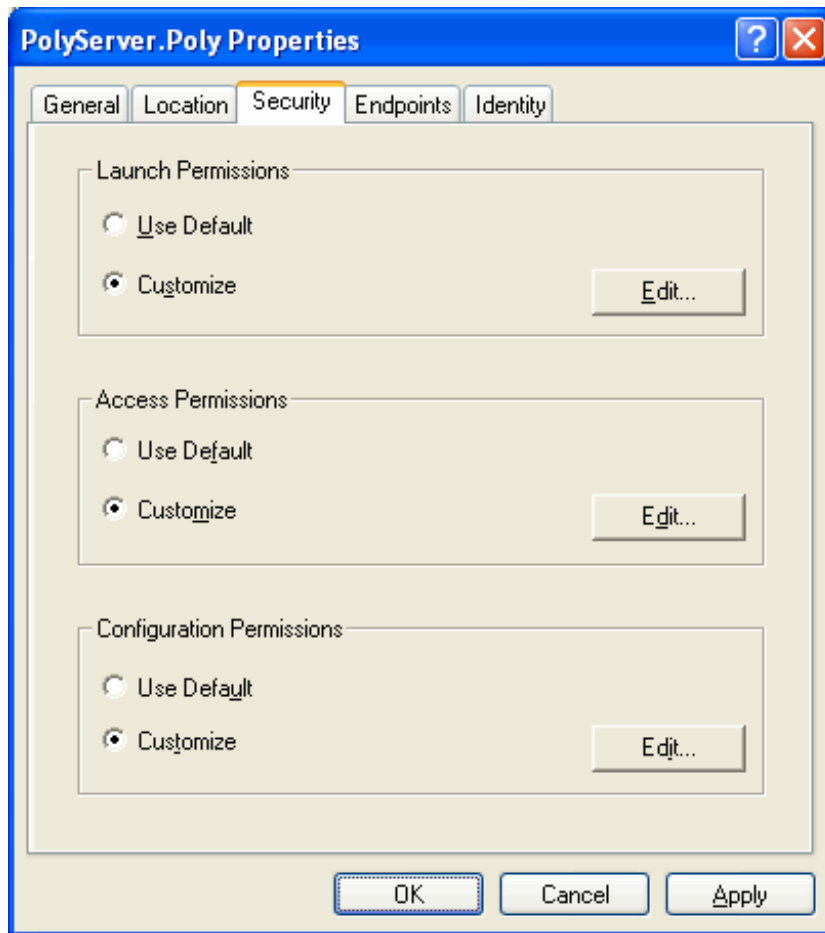
In the Location tab, select Run application on this computer.



**Fig C-2. PolyServer Properties - Identity tab**

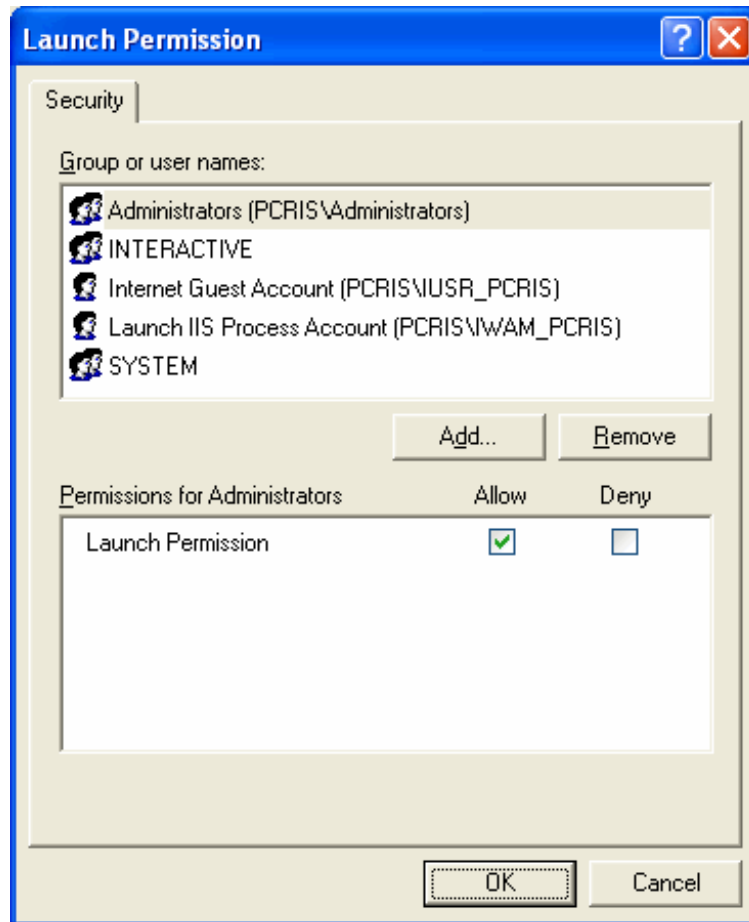
In the Identity tab, select to run the PolyServer application as "This user" and enter the name and password of the previously created user account. In this example, PCRIS is the name of the local computer. Alternatively, you may select a domain user.

NB! If you are installing the Polydoc Web Personal Edition, you may use your own account as the service account. Alternatively, you may select option "The interactive user" - if selected, the application can only be run when someone is logged in.



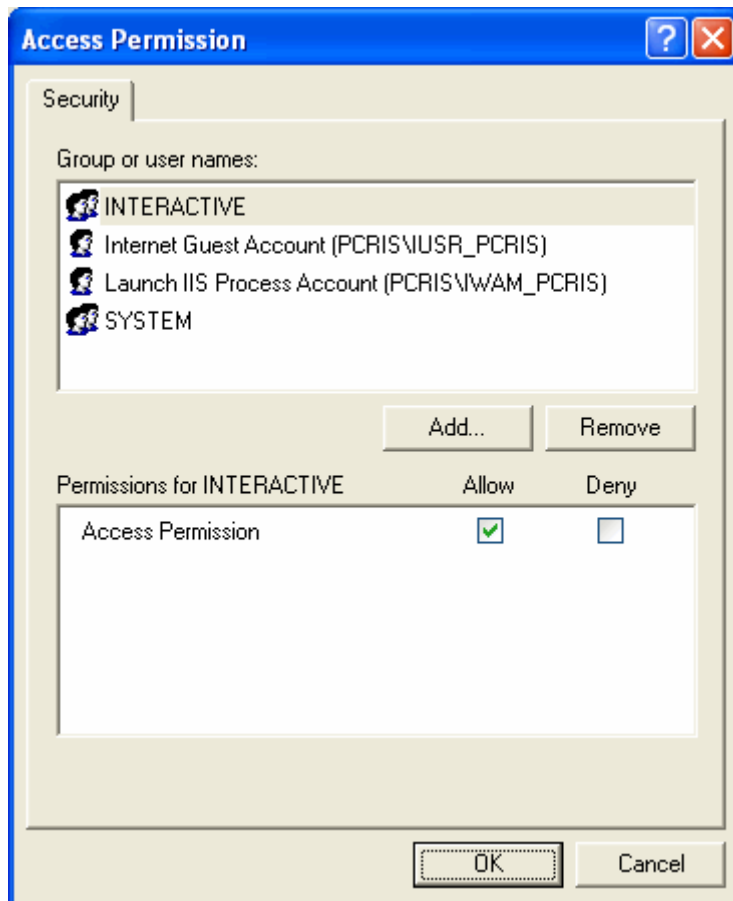
**Fig C-3. PolyServer Properties - Security tab**

In the Security tab, you may select custom access and launch permissions, see the next pages. Then press OK to save the settings and exit the dcomcnfg program.



**Fig C-4. PolyServer Properties - Launch permissions**

Set up the Launch Permissions as shown above and press the OK button. In this example the computer name is PCRIS.



**Fig C-5. PolyServer Properties – Access permissions**

Set up the Access Permissions as shown above and press the OK button. In this example the computer name is PCRIS.